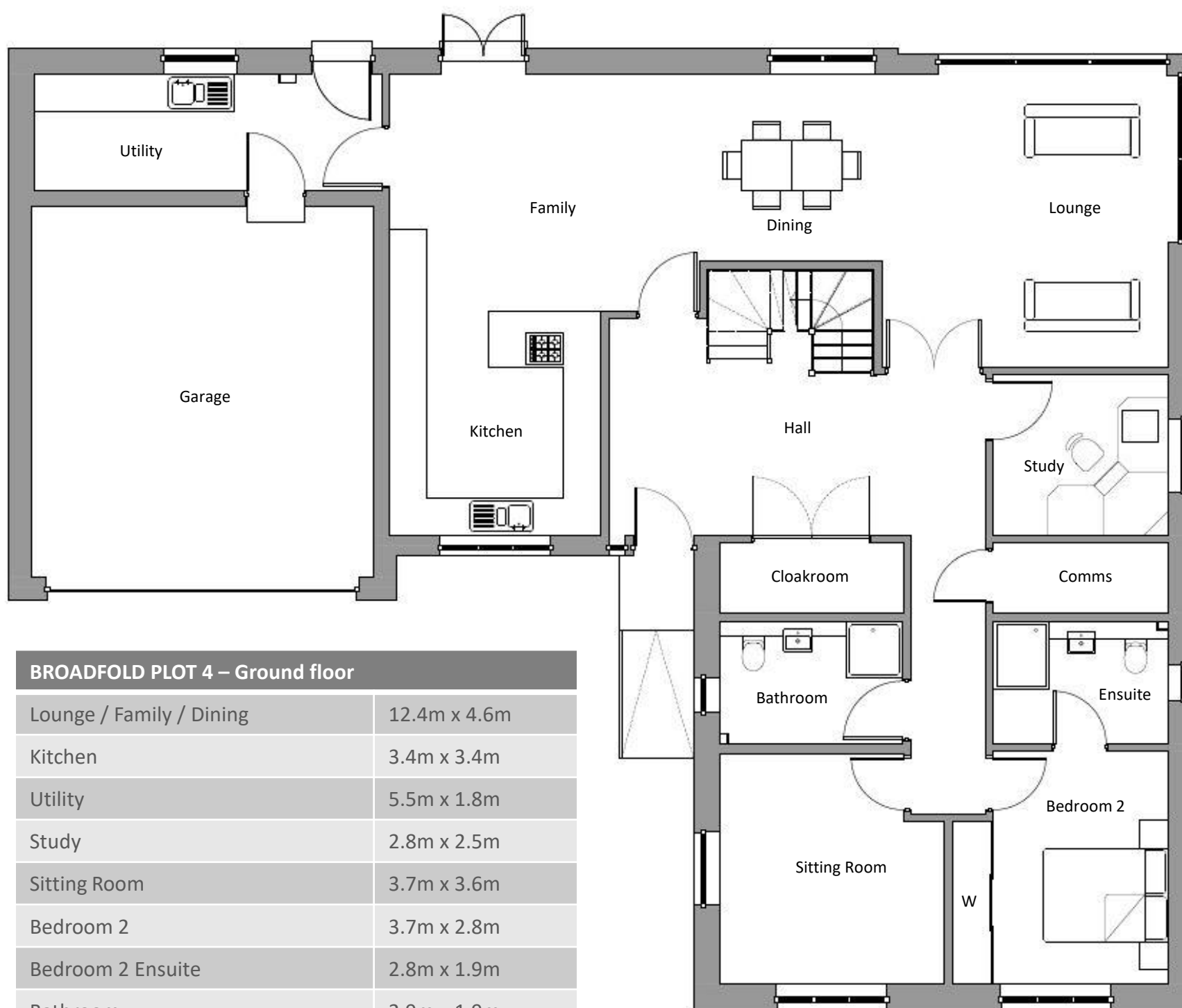


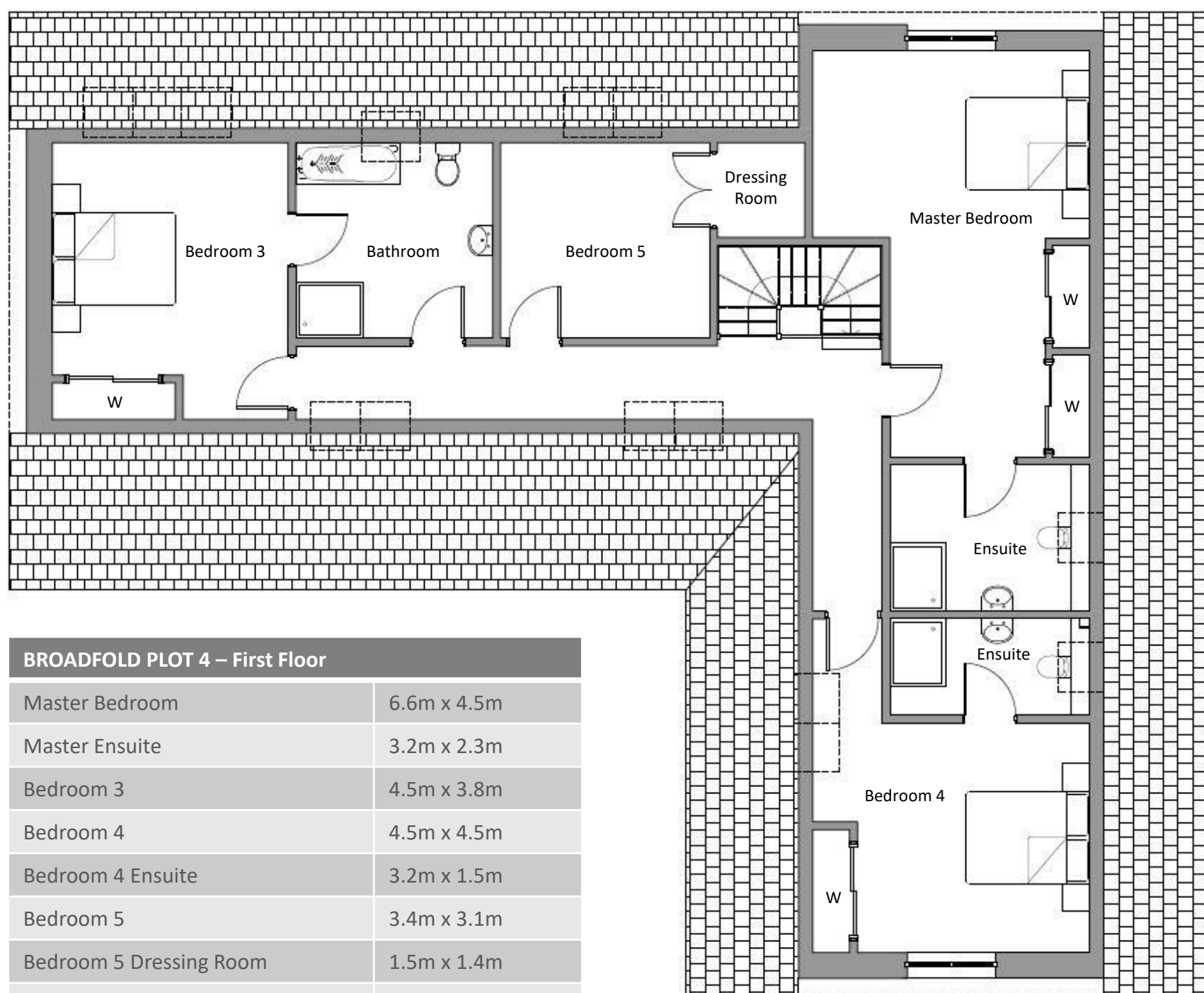


Broadfold Plot 4 Floor area 309 m2

Plot size approx. 903 m2 / 0.22 acres



BROADFOLD PLOT 4 – Ground floor	
Lounge / Family / Dining	12.4m x 4.6m
Kitchen	3.4m x 3.4m
Utility	5.5m x 1.8m
Study	2.8m x 2.5m
Sitting Room	3.7m x 3.6m
Bedroom 2	3.7m x 2.8m
Bedroom 2 Ensuite	2.8m x 1.9m
Bathroom	2.9m x 1.9m
Cloakroom	2.9m x 1.1m
Garage	5.9m x 5.5m



BROADFOLD PLOT 4 – First Floor	
Master Bedroom	6.6m x 4.5m
Master Ensuite	3.2m x 2.3m
Bedroom 3	4.5m x 3.8m
Bedroom 4	4.5m x 4.5m
Bedroom 4 Ensuite	3.2m x 1.5m
Bedroom 5	3.4m x 3.1m
Bedroom 5 Dressing Room	1.5m x 1.4m
Bathroom	3.2m x 3.1m

All plans, images and dimensions are for illustrative purposes only, and are intended to convey concept and vision of development/property. These may alter as work progresses and do not necessarily represent a true and accurate depiction of finished product and specification. These are not intended to form part of any contract.